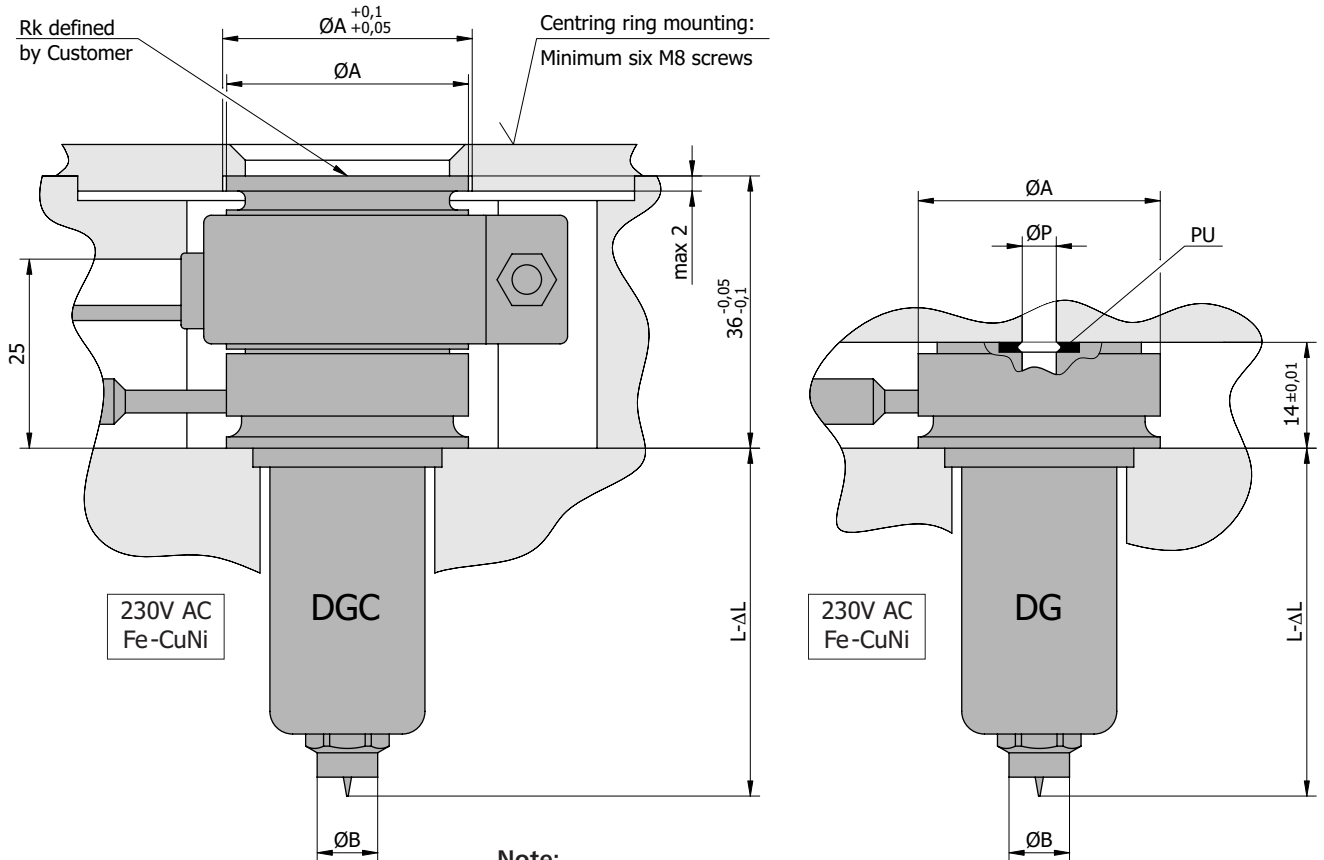
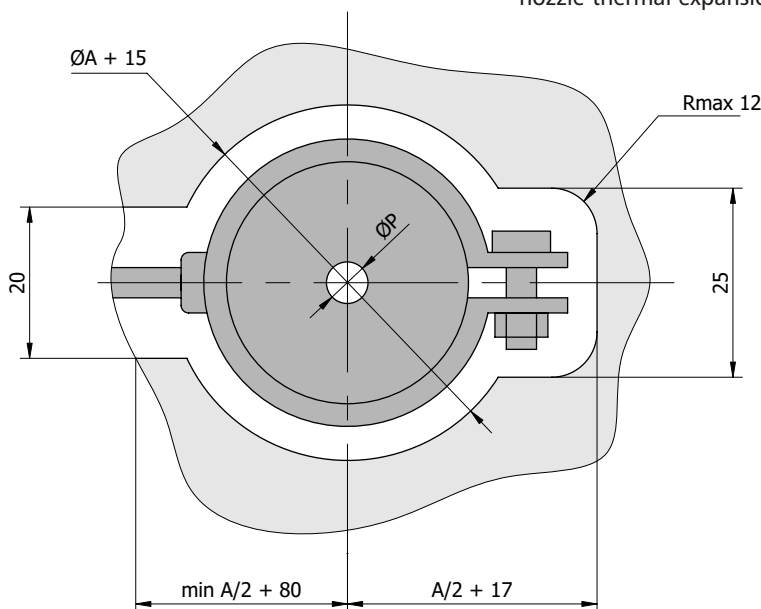


# Single nozzles DGC and nozzles for multicavity moulds DG



**Note:**  
 •  $\Delta L \cong 0,0025 L$  – Dimension including nozzle thermal expansion.



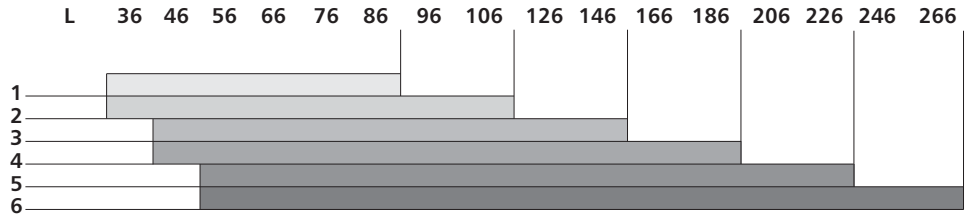
**KS** – standard tip made of beryllium bronze. Processing all non-reinforced plastics and plastics without anti-burn additives. Processing temperature up to 280°C.

**KT** – special tip made of tungsten alloys. Processing of all plastics, including reinforced ones and plastics with anti-burn additives. Processing temperature up to 360°C.

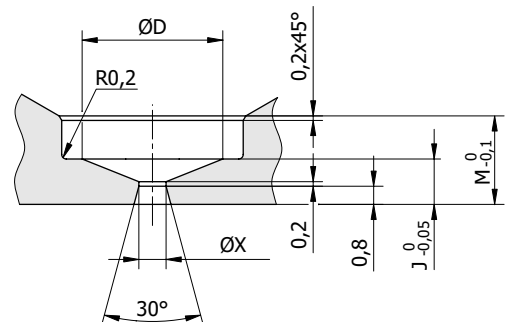
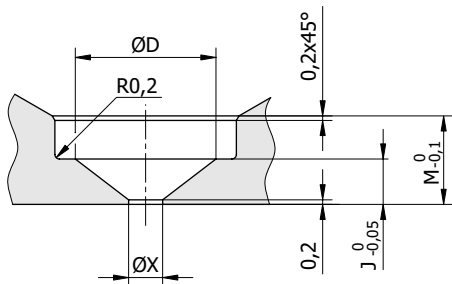
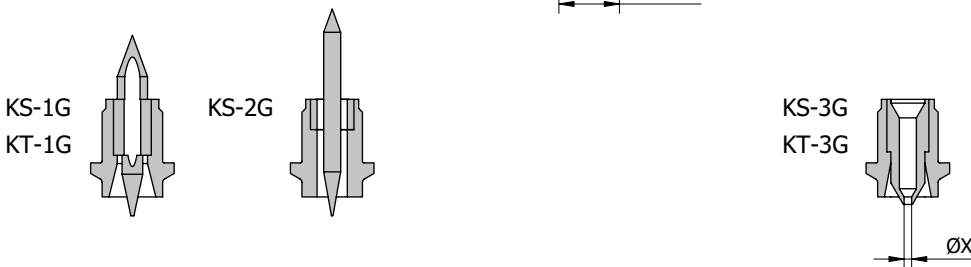
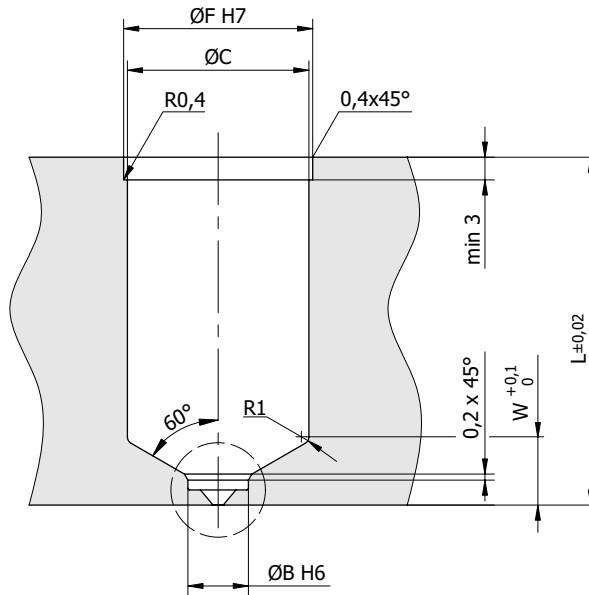
DGC and DG nozzles are as a standard equipped with a spiral heater GS. Optionally they can be equipped with a tubular heater GT which is recommended for processing thermally sensitive plastics and technical plastics (page 32).

# Single nozzles DGC and nozzles for multicavity moulds DG

Nozzle type	Ø A	Ø B	Ø C	Ø D	Ø F	J	M	Ø P	W	Ø X	
DGC	1	28	6	19	4,4	22	2	3,9	3	8,2	0,8 ÷ 1,5
	2	32	8	22	6,2	25	2,5	4,6	4,5	9,2	0,8 ÷ 2,0
	3	36	10	25	8,0	28	3	5,3	6	10,1	1,0 ÷ 2,5
DG	4	40	12	28	9,8	31	3,5	6,2	8	11,3	1,0 ÷ 3,0
	5	44	14	31	10,8	34	4	6,9	10	12,3	1,2 ÷ 3,5
	6	48	16	34	13,4	37	4,5	7,6	12	13,3	1,2 ÷ 4,0



## Nozzle seat for DGC and DG



### How to order:

Nozzle type / Nozzle length / Tip type / Gate diameter for KS-3G, KT-3G / Rk for single nozzles

Example: DGC-2 / L=76 / KS-3G / ØX=1,2 / Rk=20