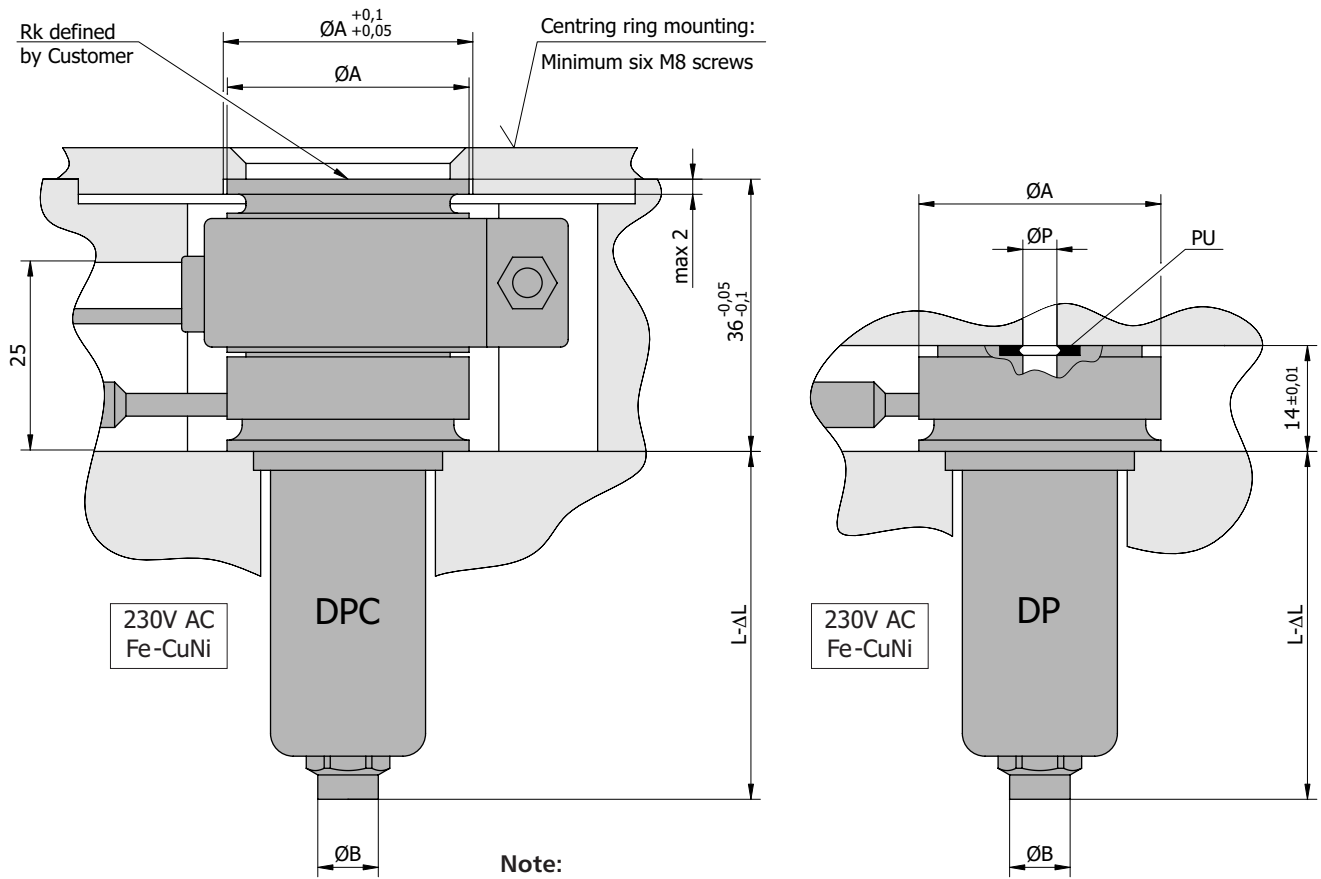
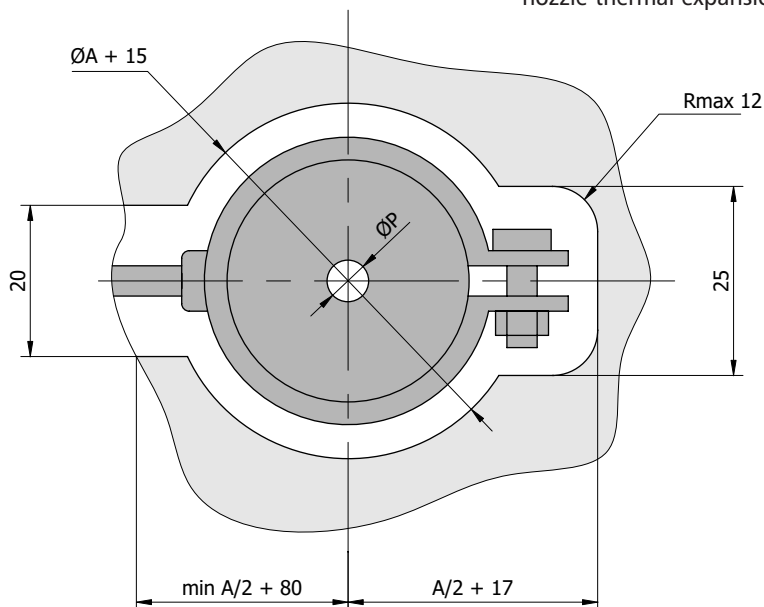


Single nozzles DPC and nozzles for multicavity moulds DP



Note:

- $\Delta L \cong 0,0025 L$ – Dimension including nozzle thermal expansion.

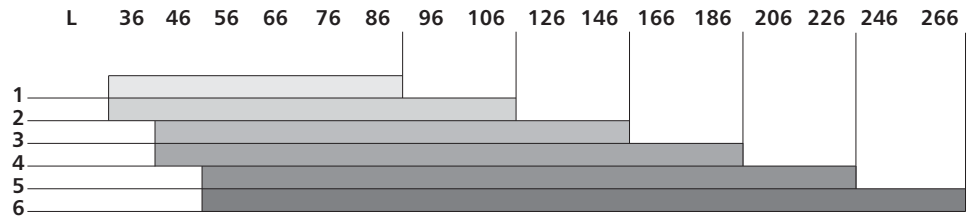


KT – hard tip made of steel. Processing of all plastics, including reinforced ones and plastics with anti-burn additives. Processing temperature up to 360°C.

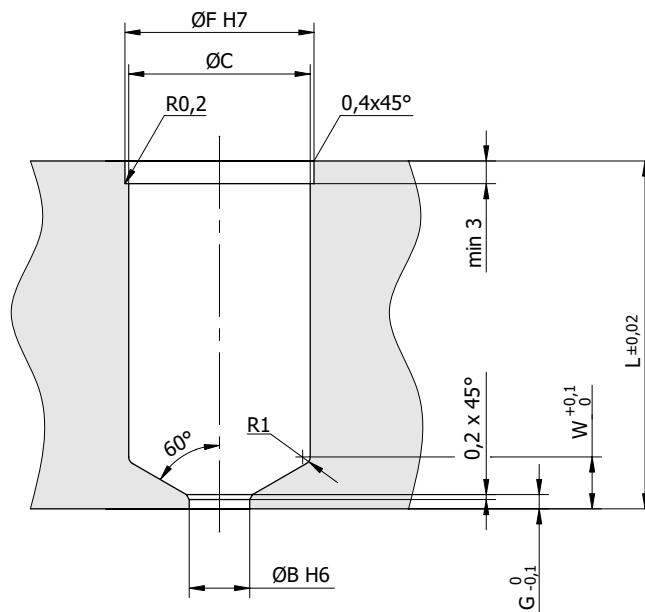
DPC and DP nozzles are in the standard version equipped with a spiral heater GS. Optionally they can be equipped with a tubular heater GT which is recommended for processing thermally sensitive plastics and technical plastics (page 32)

Single nozzles DPC and nozzles for multicavity moulds DP

Nozzle type	Ø A	Ø B	Ø C	Ø F	G	H _{max}	Ø P	W	Ø X
DPC	1	28	6	19	22	1,2	12	5,4	0,8 ÷ 2,0
	2	32	8	22	25	1,5	14	4,5	0,8 ÷ 2,5
	3	36	10	25	28	1,8	16	6,6	1,0 ÷ 3,0
DP	4	40	12	28	31	2,1	19	7,2	1,0 ÷ 3,5
	5	44	14	31	34	2,4	22	7,8	1,2 ÷ 4,0
	6	48	16	34	37	2,7	25	8,4	1,2 ÷ 4,5



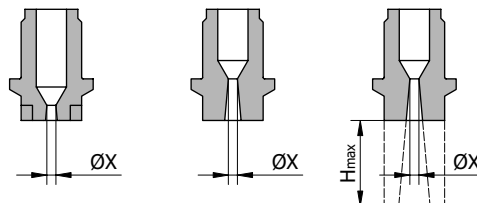
Nozzle seat for DPC and DP



KT-1P

KT-2P

KT-3P



How to order:

Nozzle type / Nozzle length / Tip type / Gate diameter / Rk for single nozzles

Example: DPC-2 / L=76 / KT-2P / ØX=1,2 / Rk=15