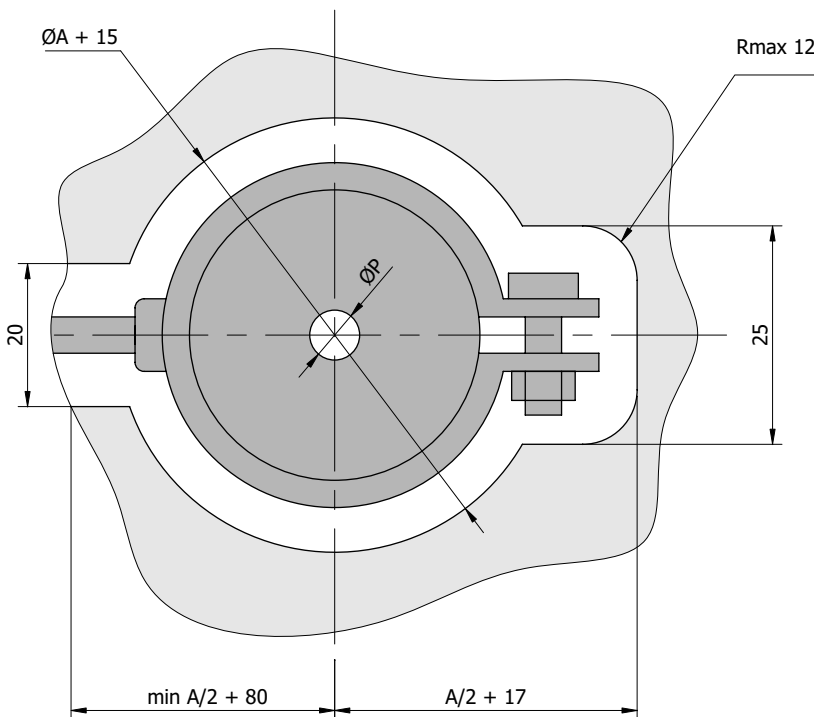
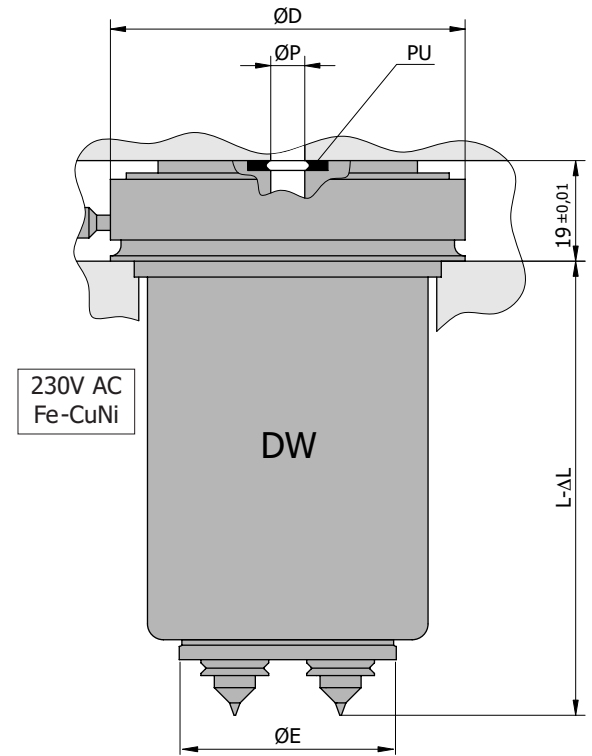
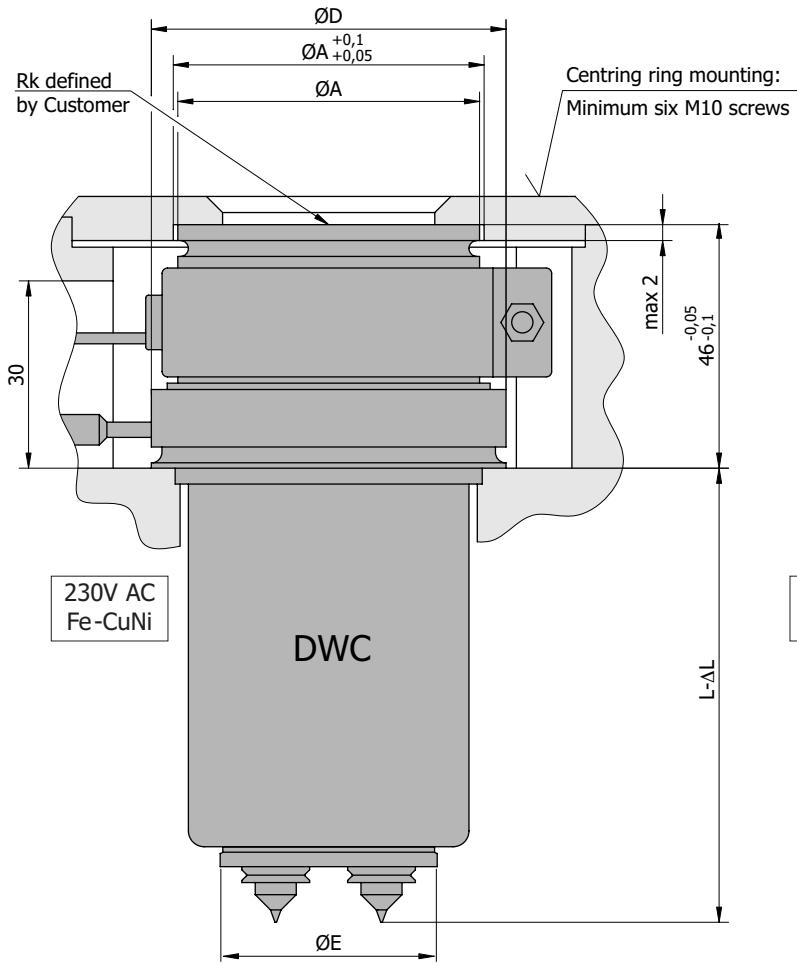


Multipoint nozzles: single DWC and for multicavity moulds DW



Note:

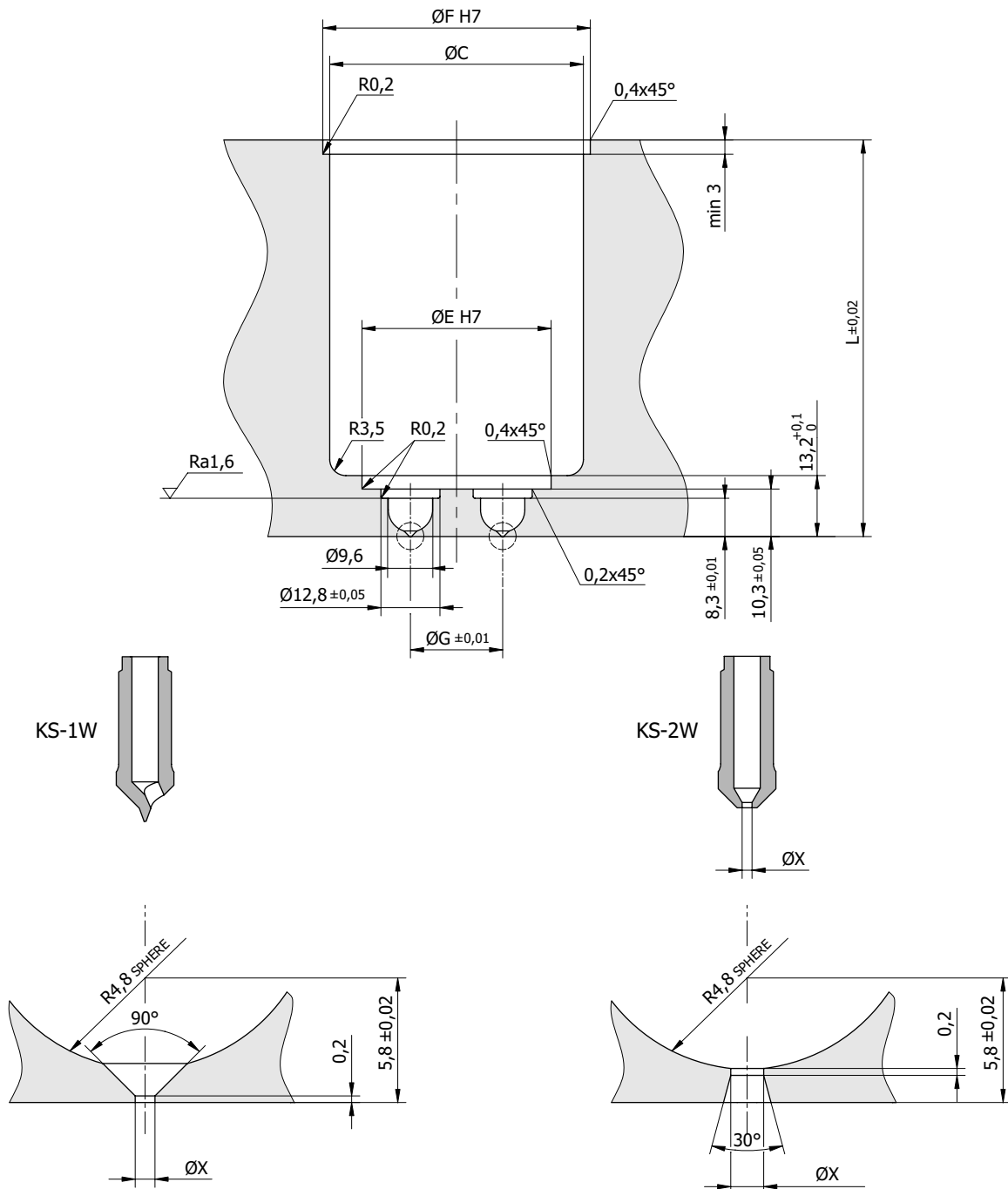
- $\Delta L \approx 0,0025 L$ – Dimension including nozzle thermal expansion.

KS – standard tip made of beryllium bronze. Processing all non-reinforced plastics and plastics without anti-burn additives. Processing temperature up to 280°C.

Multipoint nozzles: single DWC and for multicavity moulds DW

Nozzle type	Ø A	Ø C	Ø D	Ø E	Ø F	Ø G	Ø P	Ø X	n
DWC DW	1	48	47	58	33	48	4 ÷ 8	0,8 ÷ 2,0	2 ÷ 3
	2	54	52	64	38	53			2 ÷ 4
	3	60	57	70	43	58			2 ÷ 5
	4	66	62	76	48	63			2 ÷ 6
	5	72	67	82	53	68			2 ÷ 7
	6	78	72	88	58	73			2 ÷ 8

Nozzle seat for DWC and DW



Note:

- Standard nozzle length: L = 46, 56, 66, 76, 86, 96, 126
- Maximum injection mass is 100 grams per one cavity
- Recommended for PS, PP, PE, SB, SAN processing.

How to order:

Nozzle type / Nozzle length / Number of injection points / Tip type / Gate diameter for KS-2W tip / Rk for single nozzles
 Example: DCW-1 / L=56 / n=2 / KS-2W / ØX=1.5 / Rk=20