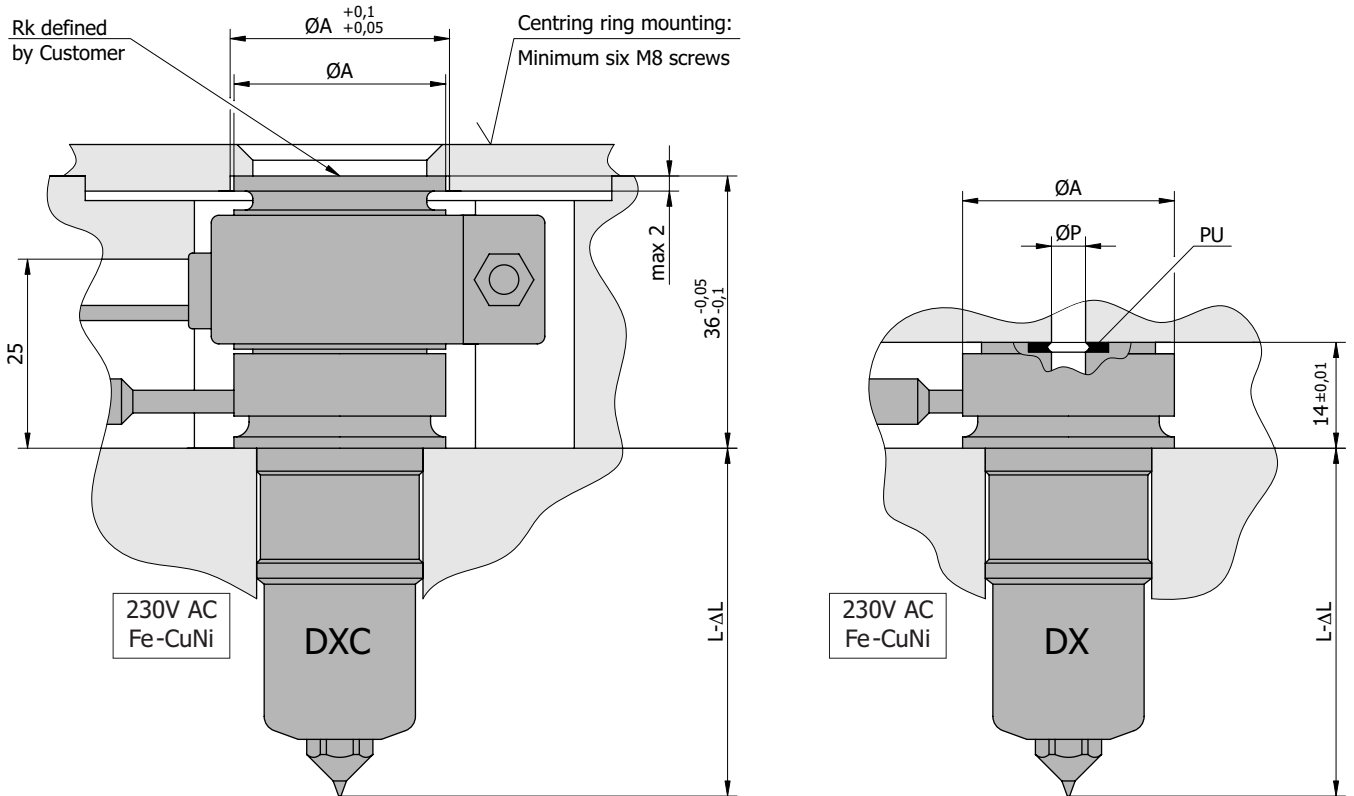
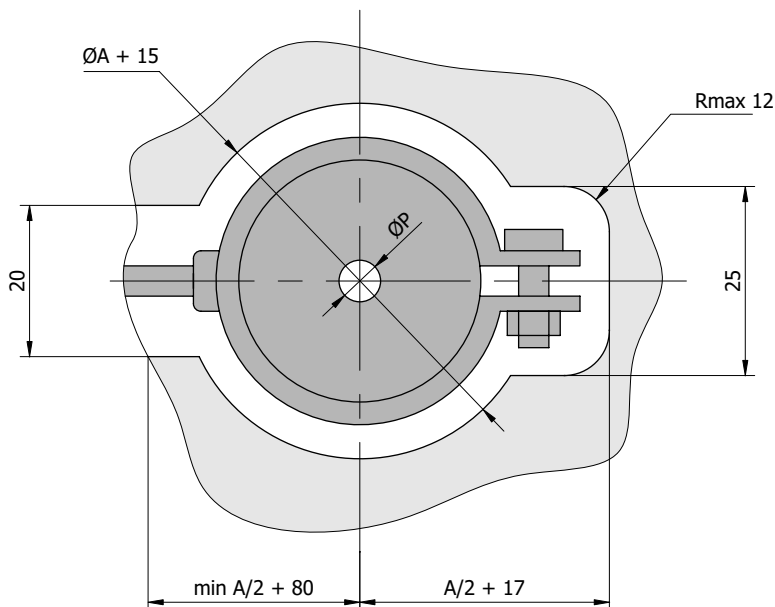


Single nozzles DXC and nozzles for multicavity moulds DX



Note:

- $\Delta L \cong 0,0025 L$ – Dimension including nozzle thermal expansion.



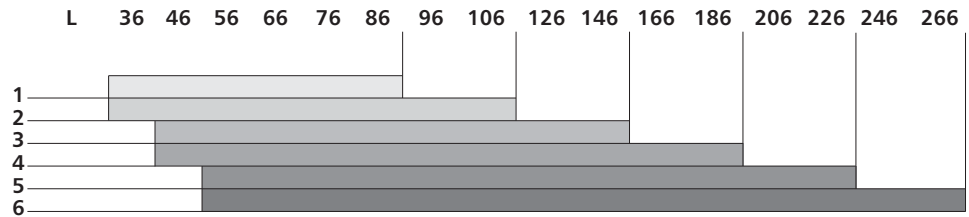
KS – standard tip made of beryllium bronze. Processing all non-reinforced plastics and plastics without anti-burn additives. Processing temperature up to 280°C.

KT – special tip made of tungsten alloys. Processing of all plastics, including reinforced ones and plastics with anti-burn additives. Processing temperature up to 360°C.

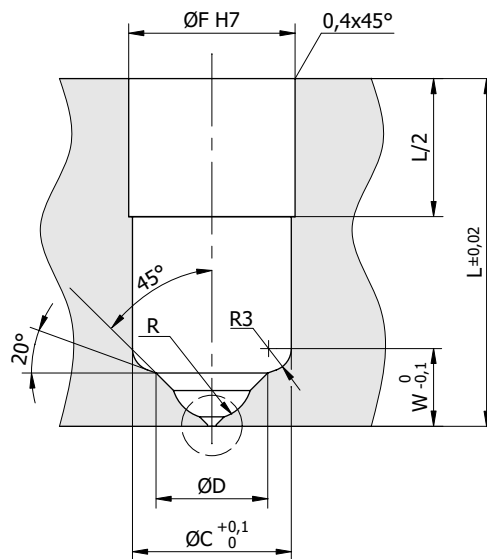
DIC and DI nozzles are in the standard version equipped with a spiral heater GS.

Single nozzles DXC and nozzles for multicavity moulds DX

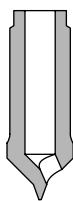
Nozzle type	Ø A	Ø C	Ø D	Ø F	Ø P	R	W	Ø X
DXC	1	28	18,8	11,4	19	3	4,3	0,8 ÷ 2,0
	2	32	21,8	14,4	22	4,5	5,3	0,8 ÷ 2,5
	3	36	25,8	18,3	26	6	6,8	1,0 ÷ 3,0
DX	4	40	29,8	22,2	30	8	8,3	1,0 ÷ 3,5
	5	44	33,8	26,2	34	10	9,8	1,2 ÷ 4,0
	6	48	38,8	30,1	39	12	11,8	1,2 ÷ 4,5



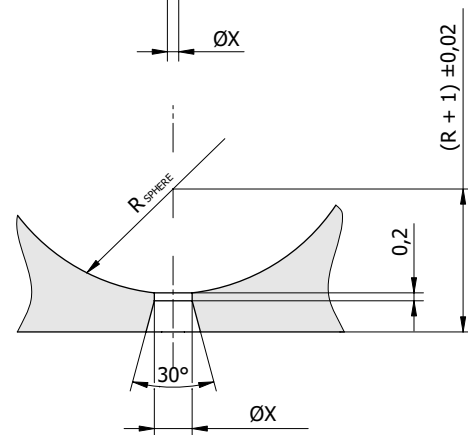
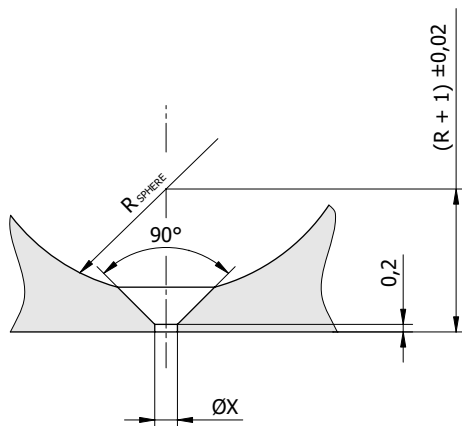
Nozzle seat for DXC and DX



KS-1X
KT-1X



KS-2X
KT-2X



How to order:

Nozzle type / Nozzle length / Tip type / Gate diameter for KS-2X, KT-2X / Rk for single nozzles
Example: DXC-2 / L=66 / KS-2X / ØX=2 / Rk=20