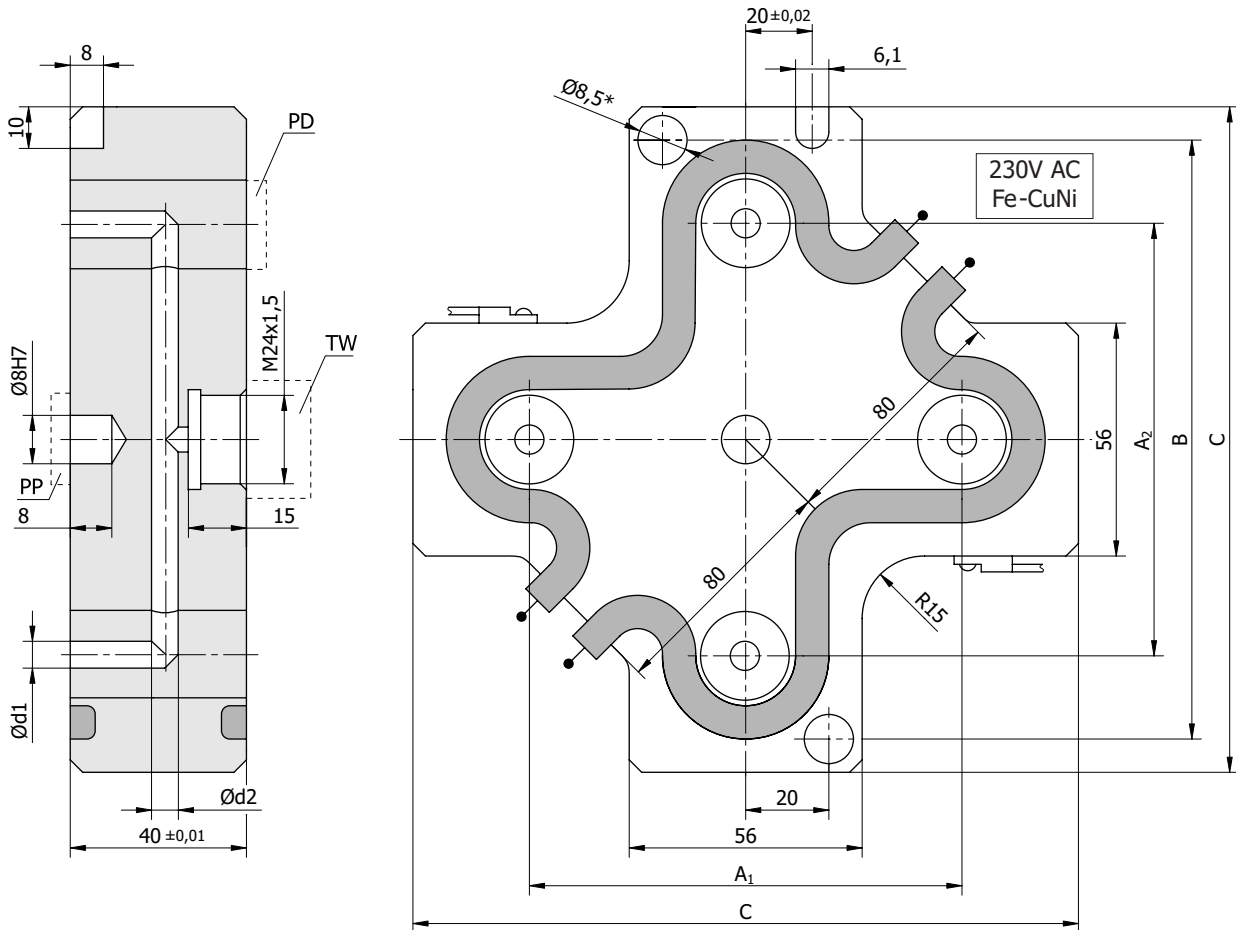


4 cavity manifold type RK



manifold type	A ₁ /A ₂		B	C	Ø d1	Ø d2	P per zone	number of heating zones
	min	max						
RK - 1	75	100	140	156	4	6	800	1
RK - 2	100	125	165	181			1000	1
RK - 3	125	150	195	206			1200	1
RK - 4	150	175	215	231			1400	2
RK - 5	175	200	240	256			1600	2
RK - 6	200	250	290	306			1800	2
RK - 7	250	300	340	356			2400	2
RK - 8	300	350	390	406			3000	2
RK - 9	350	400	440	456			1800	4
RK - 10	400	450	490	506			2000	4
RK - 11	450	500	540	556			2400	4

Note:

- Dimension Ø8,5* changes into M10 thread which facilitates removing manifold from the injection mould.
- Diameters of channels inside the manifold Ød1 and Ød2 are defined for each nozzle type.
- Spacing washers PD have standard height 12. The height of bearing washer PP is defined for each nozzle type.

How to order:

Manifold type / Injection points spacing / Injection bushing dimensions (see p. 31)

Example: RK-6 / A₁=200 / A₂=250 / TW