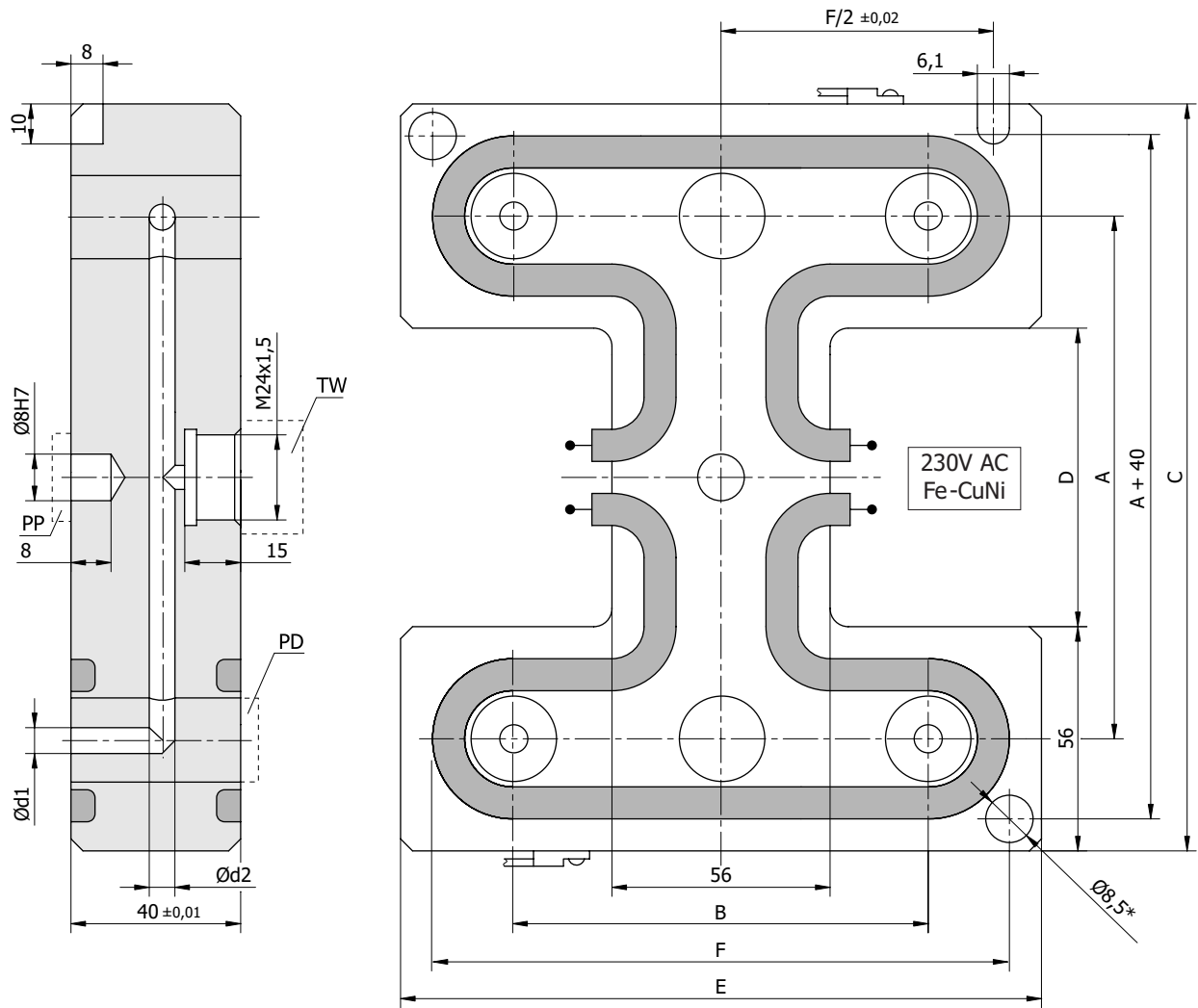


4 cavity manifold type RT



manifold type	A	B		C	D	E	F	Ø d1	Ø d2	P per zone	number of heating zones
		min	max								
RT - 1	100	50	100	156	44	156	140	4	6 8 10 12 14	2200	1
RT - 2	150	50	100	206	94	156	140	5,5		2800	1
RT - 3	200	50	100	256	144	156	140	7		1800	2
RT - 4	100	100	150	156	44	206	190	9		1500	2
RT - 5	150	100	150	206	94	206	190	11		2000	2
RT - 6	200	100	150	256	144	206	190	13		2800	2

Note:

- Dimension Ø8,5* changes into M10 thread which facilitates removing manifold from the injection mould.
- Diameters of channels inside the manifold Ød1 and Ød2 are defined for each nozzle type.
- Spacing washers PD have standard height 12. The height of bearing washer PP is defined for each nozzle type.

How to order:

Manifold type / Injection points spacing / Injection bushing dimensions (see p. 31)

Example: RT-1 / B=75 / TW